



Figs. 1a-b) Photographs of Georges Clairin.



Fig. 1c) Paul Mathey, Portrait of Georges Clairin, oil on canvas, Musée d'Orsay.



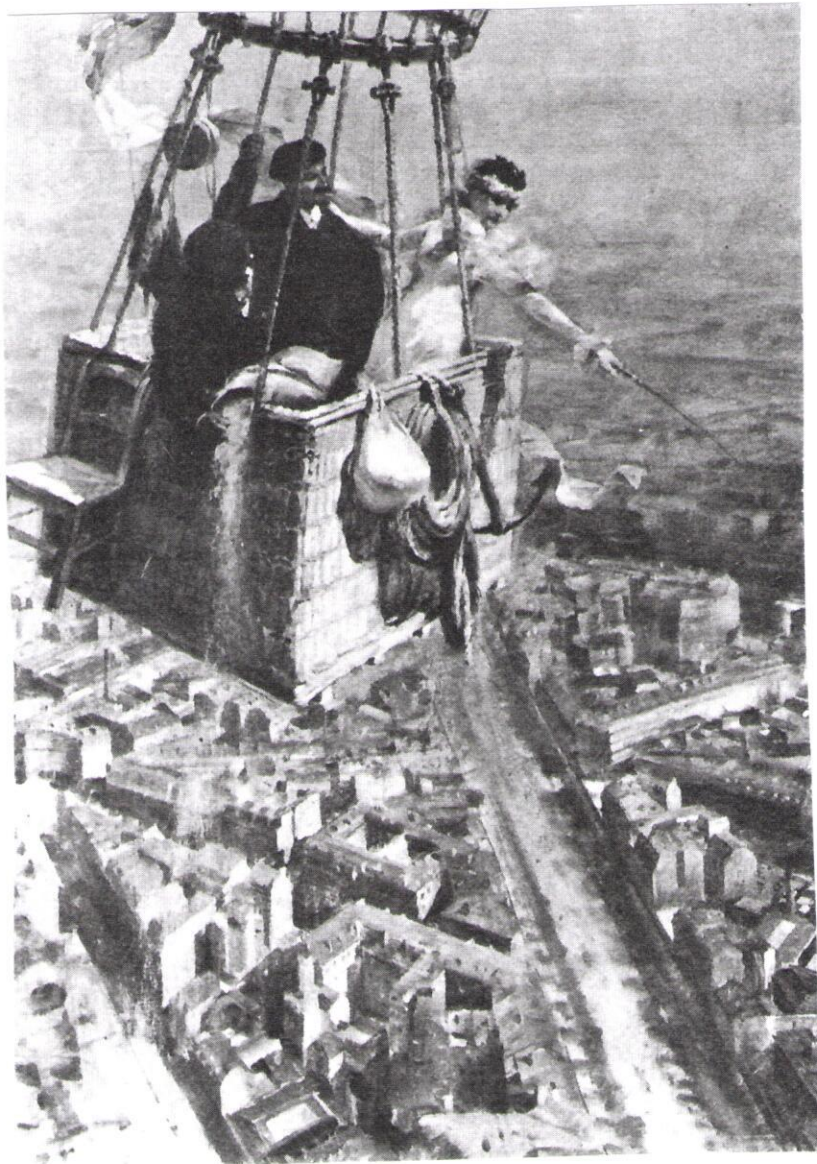


Fig. 2) Sarah Bernhardt and Georges Clairin in Hot Air Balloon over Paris, 1878





Figs. 3a-c) Photographs of Sarah Bernhardt and Georges Clairin with other Friends at Belle-Île-en-Mer, 1890s.





Fig. 4a) Georges Clairin, Portrait of Sarah Bernhardt, oil on canvas, 1876, Musée du Petit Palais, Paris.





Fig. 4b) Georges Clairin, Sarah Bernhardt as Danae illustrating the month of January, painted for the Galerie du Glacier at the Opéra Garnier, Paris, 1878



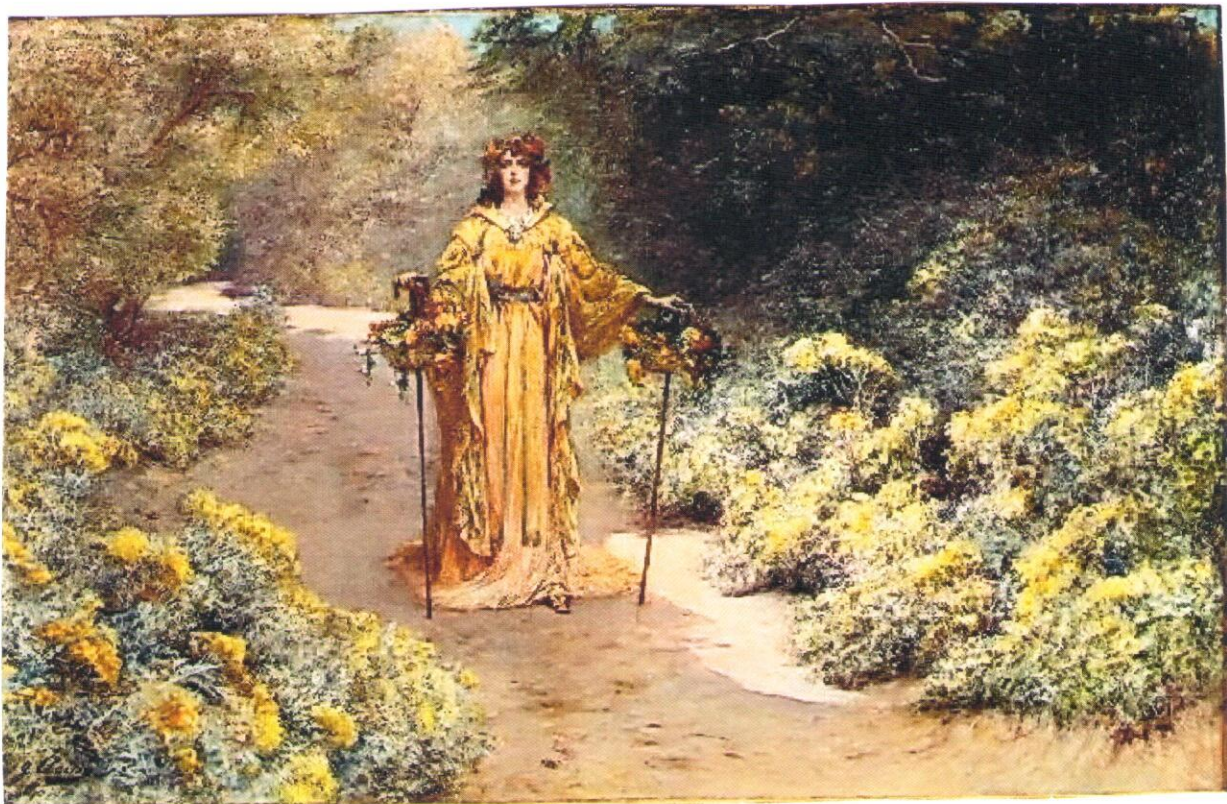


Fig.5a) Georges Clairin, Sarah Bernhardt Reclining, oil on canvas.

Fig. 5b) Georges Clairin, Sarah Bernhardt in her Garden (at Belle-Île-en-Mer), oil on canvas, ca. 1895





Fig. 5c) Georges Clairin, Sarah Bernhardt with a Fan, oil on canvas





Fig. 5d) Georges Clairin, Sarah Bernhardt dressed for a Ball, Bibliothèque de l' Arsenal, Paris





Fig. 6a) Georges Clairin, Sarah Bernhardt as Doña Maria in Victor Hugo's *Ruy Blas*, oil on canvas, 1879, Comedie Française, Paris.



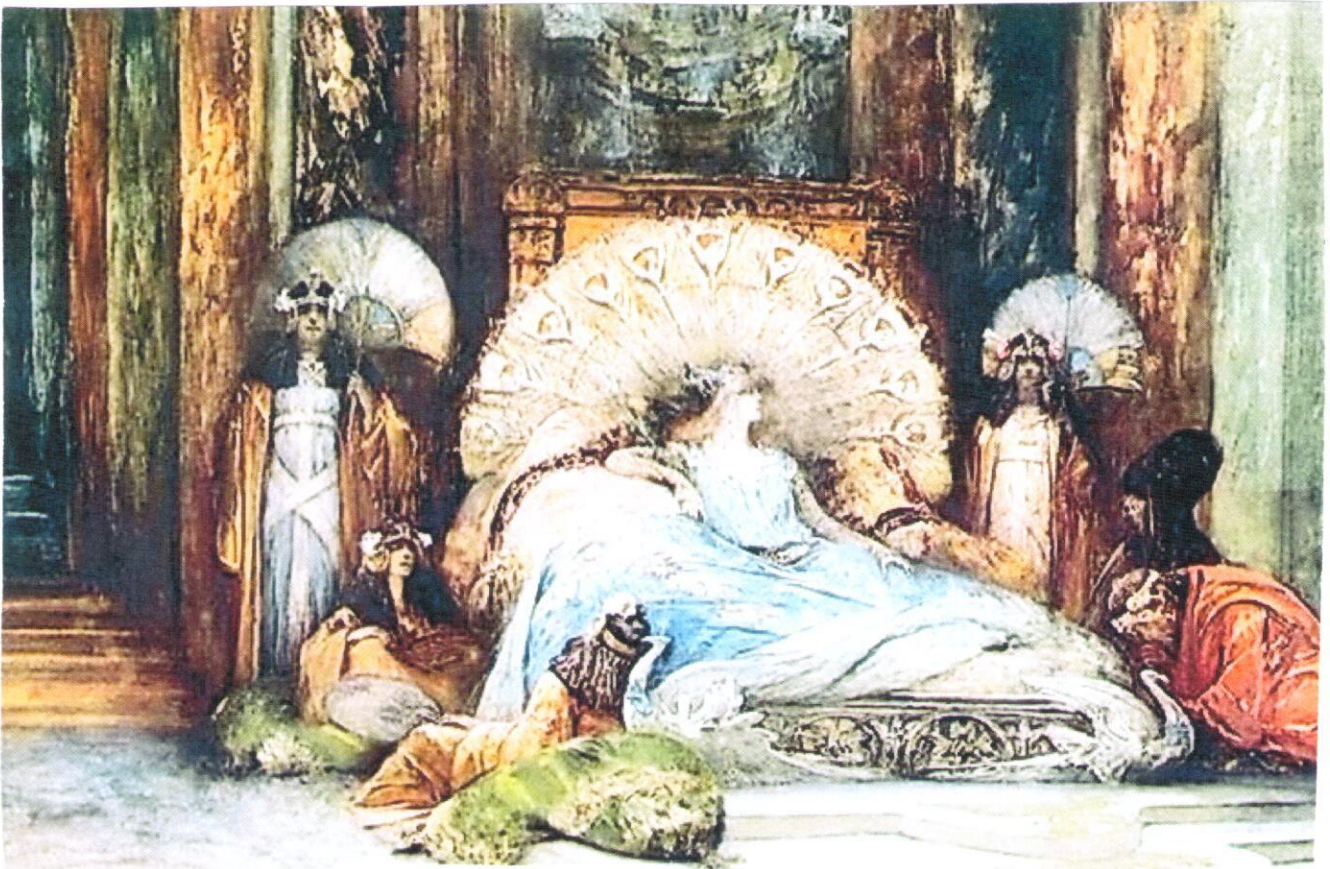


Fig. 6b) Georges Clairin, Sarah Bernhardt in Théodora, oil on canvas, ca. 1884





Fig. 6c) Georges Clairin, Portrait of Sarah Bernhardt probably in the Role of Theodora, oil on canvas, ca.1902, Musée d'Orsay.





Fig. 6d) Georges Clairin, Poster for Sarah Bernhardt in Théodora, 1902, Bibliothèque Nationale, Paris





Fig. 6e) Georges Clairin, Sarah Bernhardt as Ophelia, oil on canvas, ca. 1886

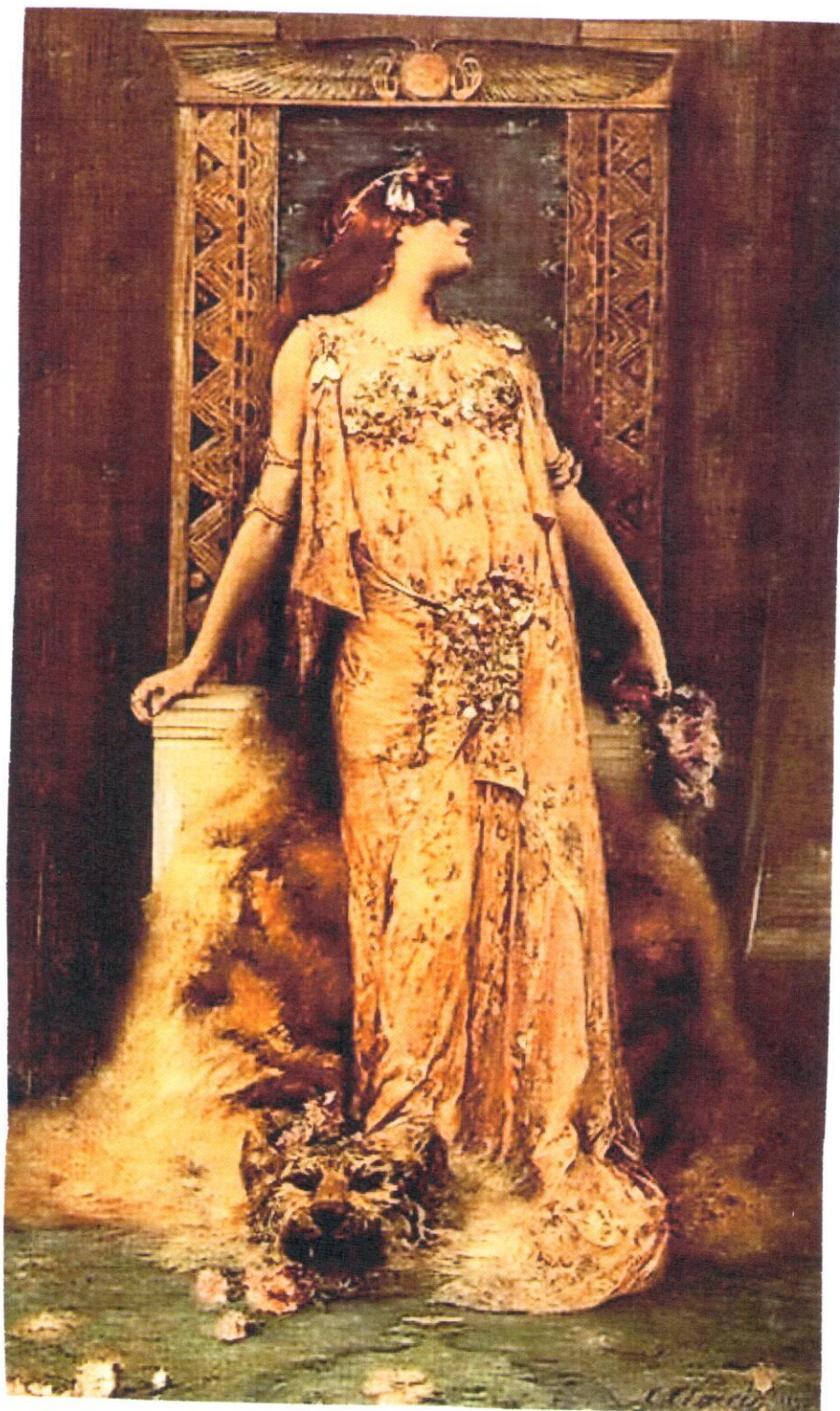


Fig. 6f) Georges Clairin, Sarah Bernhardt as Cleopatra, oil on canvas, ca. 1890.



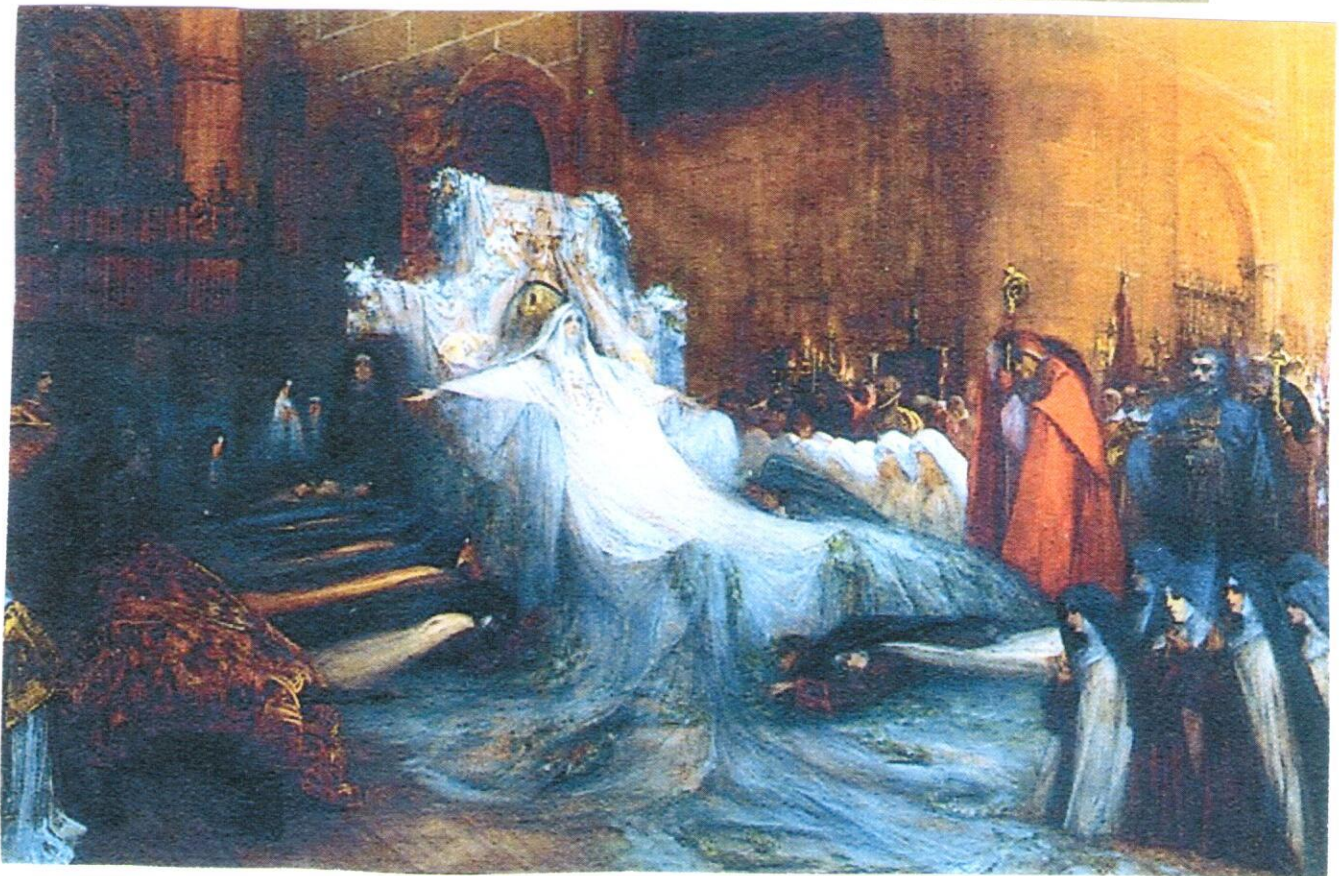
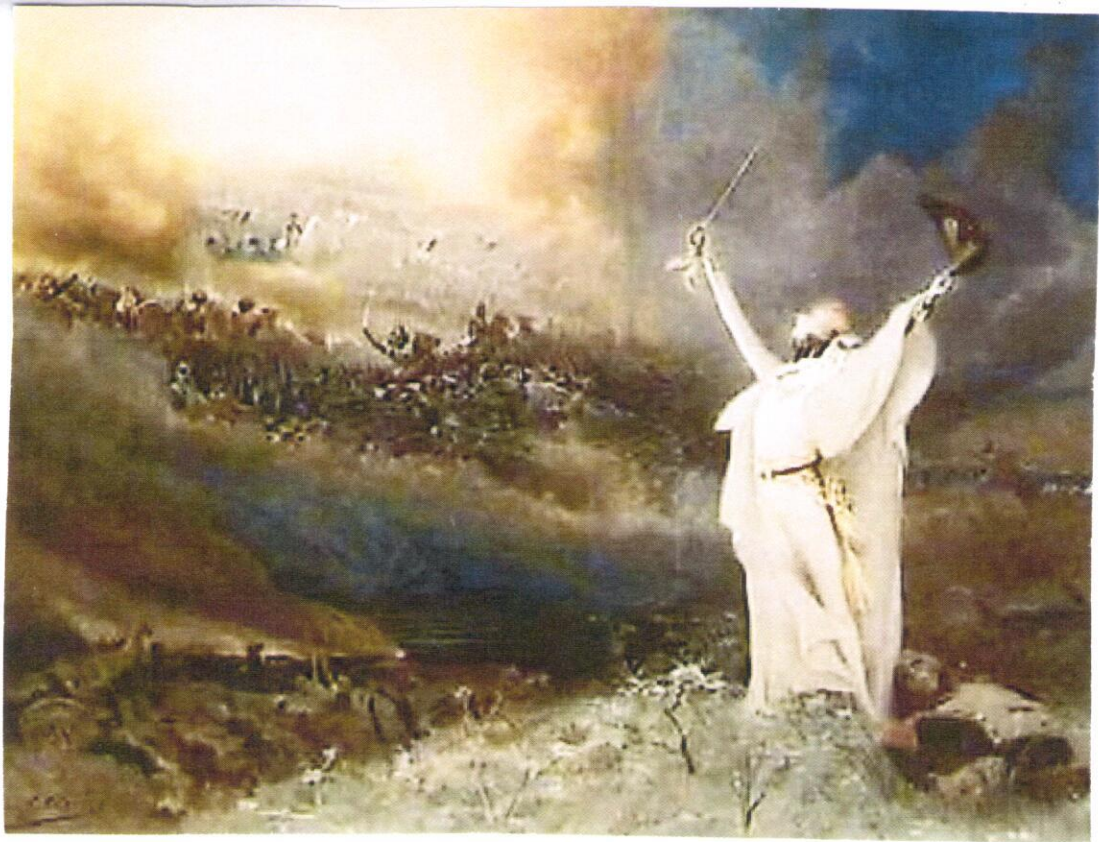


Fig. 6g) Georges Clairin, Sarah Bernhardt in *L'Aiglon*, oil on canvas, ca. 1900

Fig. 6h) Georges Clairin, Sarah Bernhardt as St. Theresa of Avila, oil on canvas, ca. 1906.





Fig. 6i) Georges Clairin, Sarah Bernhardt in a theatrical roles – possibly La Princesse lointaine, 1899

Fig. 6j) Georges Clairin, Sarah Bernhardt in a theatrical role – possibly Théroigne de Méricourt, 1902