



Figs. 14a-c) F. Nadar, photographs of Sarah Bernhardt in the role of Izyl, 1894



Figs. 14a-c) F. Nadar, photographs of Sarah Bernhardt in the role of Izyel, 1894



Figs. 14a-c) F. Nadar, photographs of Sarah Bernhardt in the role of Izyel, 1894

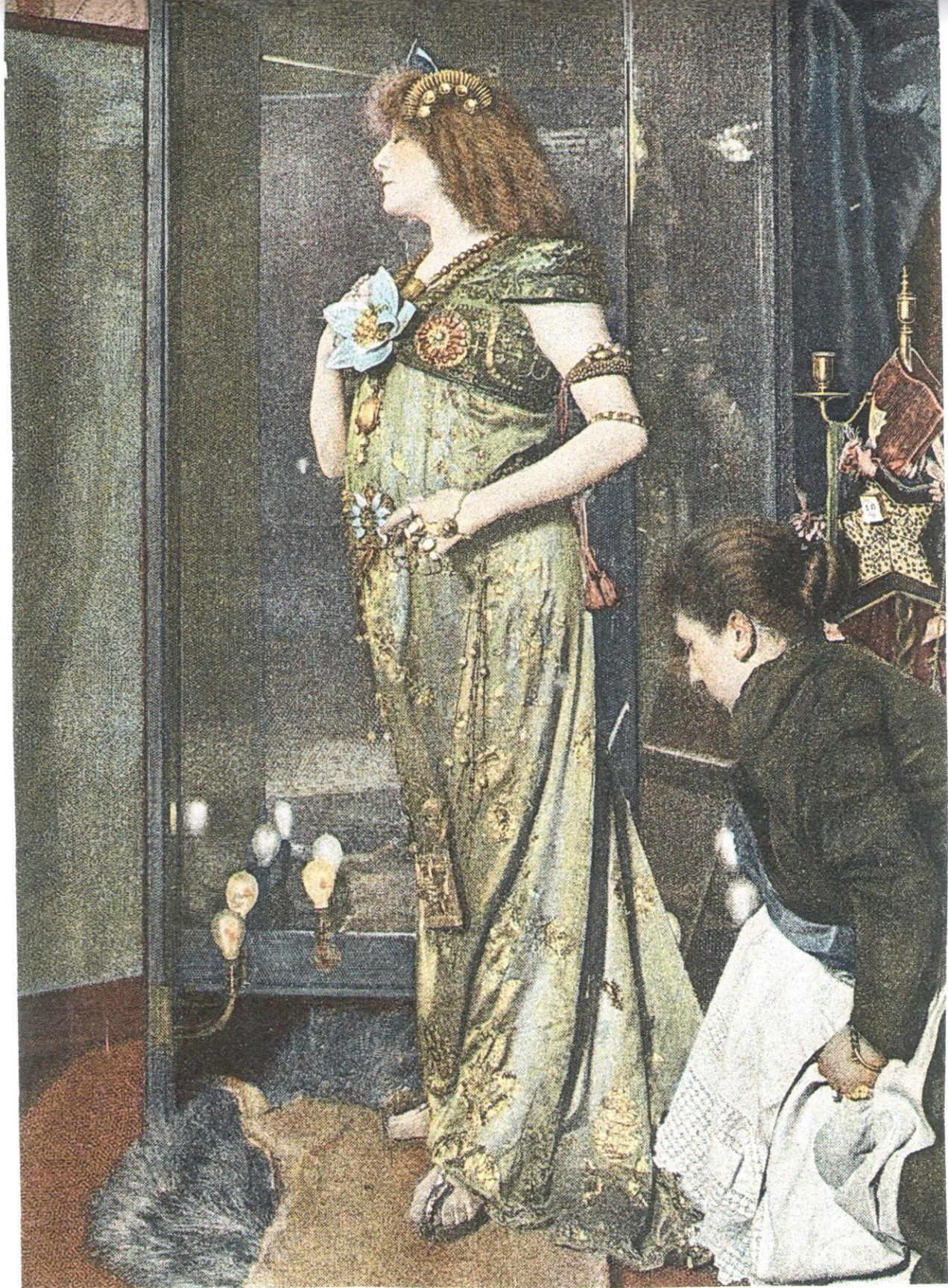


Fig. 14d) H. Mairet, Sarah Bernhardt in her dressing-room during the performance of *Izyl*, detail of a photogravure, published in L'Écho de Paris, 1894.



Fig. 15) René Lalique, Jeweled Flower for Sarah Bernhardt in Izyel, 1894



Fig. 16) Marie-Désiré Bourgoïn, Sarah Bernhardt's Studio, watercolor, 1879, The Metropolitan Museum of Art, New York.



Fig. 17a) Nadar, Sarah Bernhardt as Izyel, 1894



Fig. 17b) Nadar, Sarah Bernhardt as Izyel, 1894





Fig. 17c) Nadar, Sarah Bernhardt as Izyl, 1894



Fig. 18) Sarah Bernhardt in Izyel (detail)