



Fig. 1) E. Devéria, Portrait of the Grand Duchess Stephanie de Bade, watercolor, 1849-50, Brodick Castle.





Fig. 2) E. Devéria, Portrait of Madame de Champfeu, oil on canvas, 1842, Musée de Moulins.





Fig. 3) Sir. H. Raeburn, Portrait of Lord Eldin, oil on canvas, ca. 1815, Scottish National Portrait Gallery, Edinburgh.



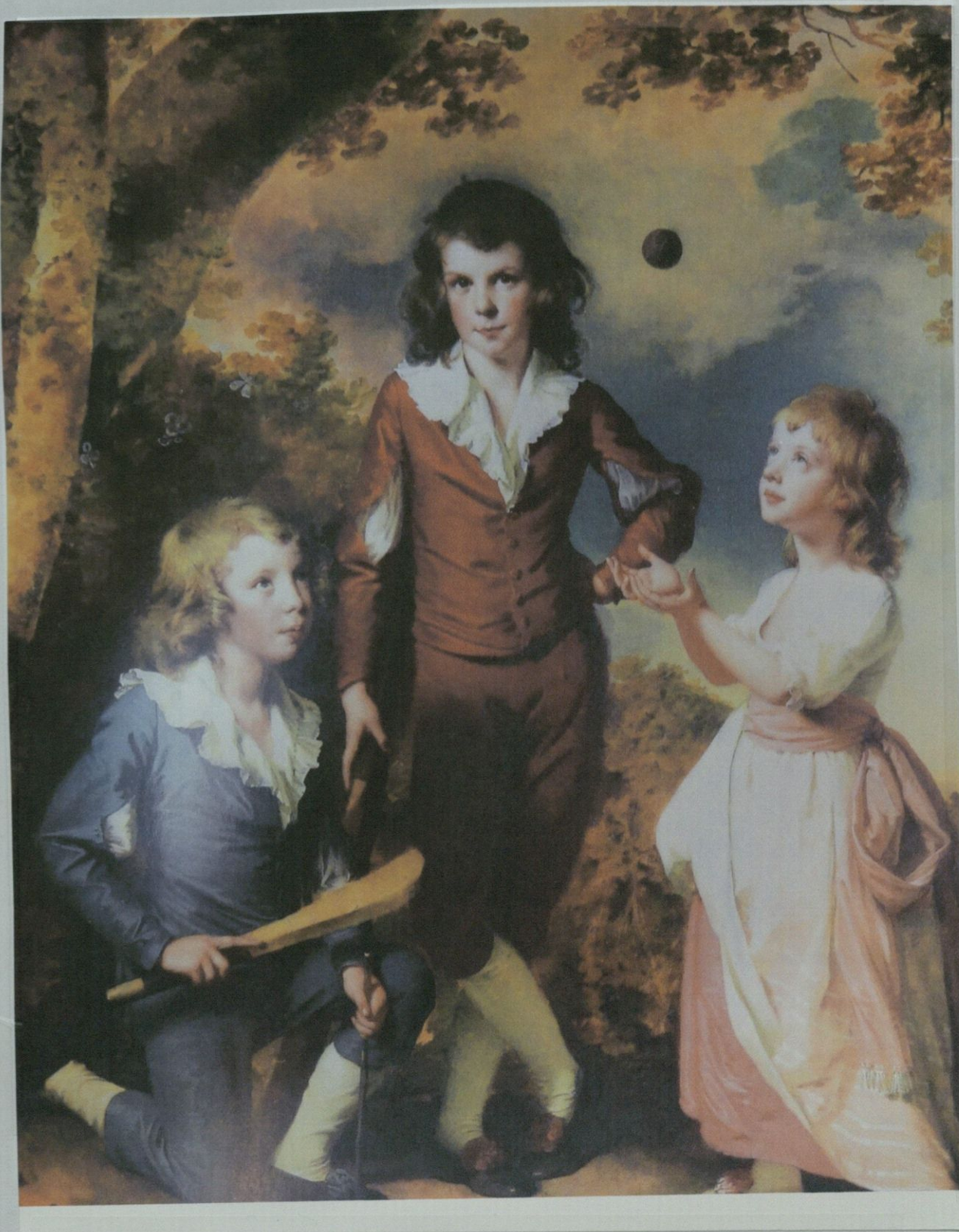


Fig. 4) Joseph Wright, The Wood Children, oil on canvas, 1789, Derby Museum and Art Gallery.





Fig. 5) Sir. H. Raeburn, Portrait of Sir Walter Scott, oil on canvas, 1808-09, Duke of Buccleuch Collection.



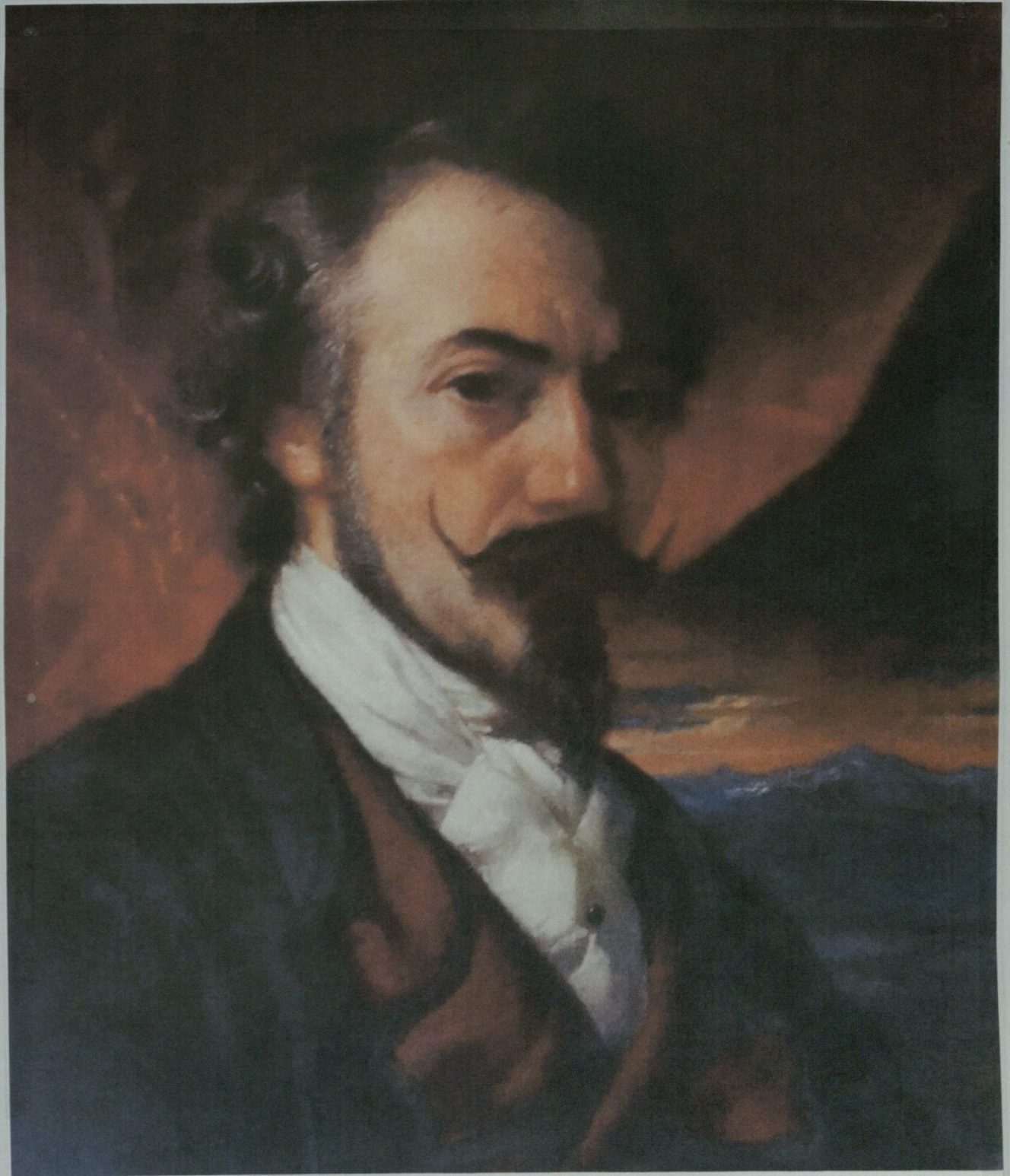


Fig. 6) E. Devéria, Self Portait, pastel, 1851, Minneapolis Art Institute.