



Fig. 1a: Léon Navez, The Painter and His Models, oil on canvas, 1926

Fig. 1b: Photograph of Léon Navez



Fig. 2: Léon Navez, Peasant Family, oil on canvas



Fig. 3: Anto Carte, Maternity, oil on canvas



Fig. 4: Léon Navez, The Ages of Women, oil on canvas, 1924



Fig. 5: Léon Navez, Mother and Child with Basket of Apples, oil on canvas, 1925

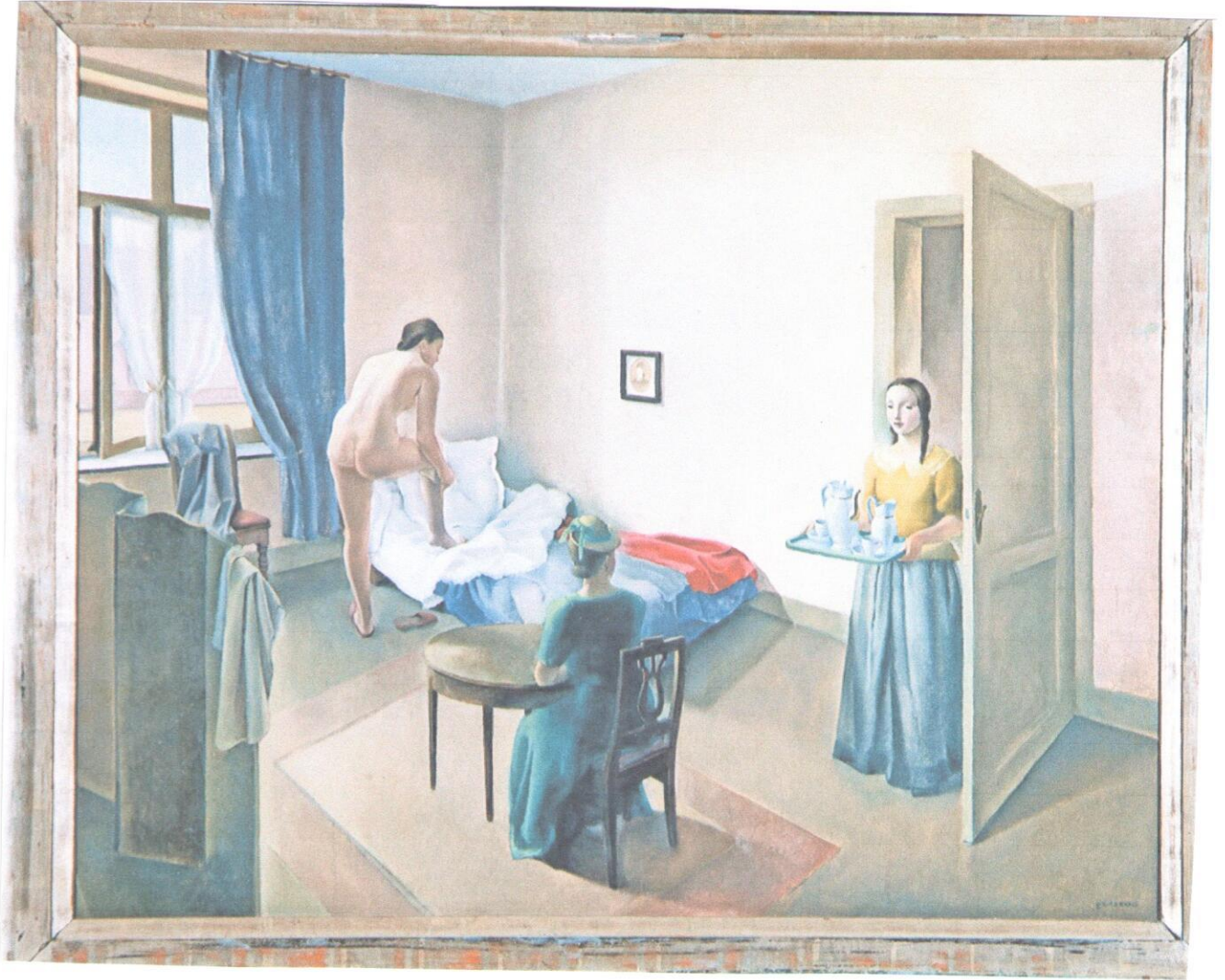


Fig. 6: Léon Navez, Interior, 1929



Fig. 7: Léon Navez, La Toilette, 1935

quel homme!

1173
à Monsieur
de la Société
des Arts et
de la Littérature

MUSEUM OF ART
Cleveland
No. 10196/10

G. VAN GELUWE
St. Raphaël
Bruxelles
Belgium
No. 181

Cleveland Museum
of Art
No. 10196/10

Kunsthalle Basel
No. 2373



*Gustave Van Geluwe
is the finest
tailor in Belgium
and a generous patron
of young artists;
his unique collection
of paintings and sculpture
is the image of
a vital personality.*



Figs. 8a and b: Photographs of the Collector Gustave Van Geluwe

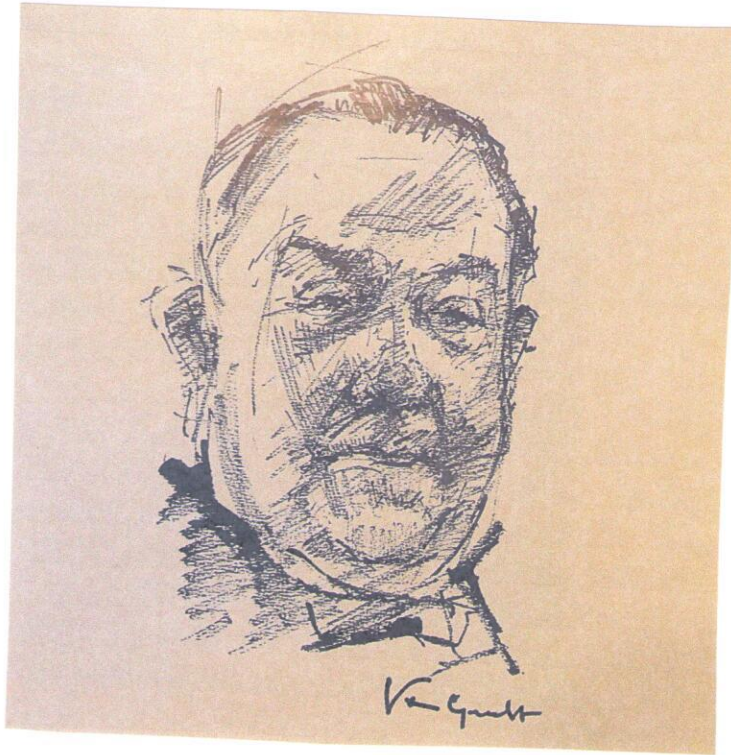


Fig: 8c: Portrait of Gustav Van Geluwe by J. Van Gucht (1913-1980)

Fig. 8d: Photograph of Gustave Van Geluwe with the Belgian painter Edgard Tytgat (1879-1957)

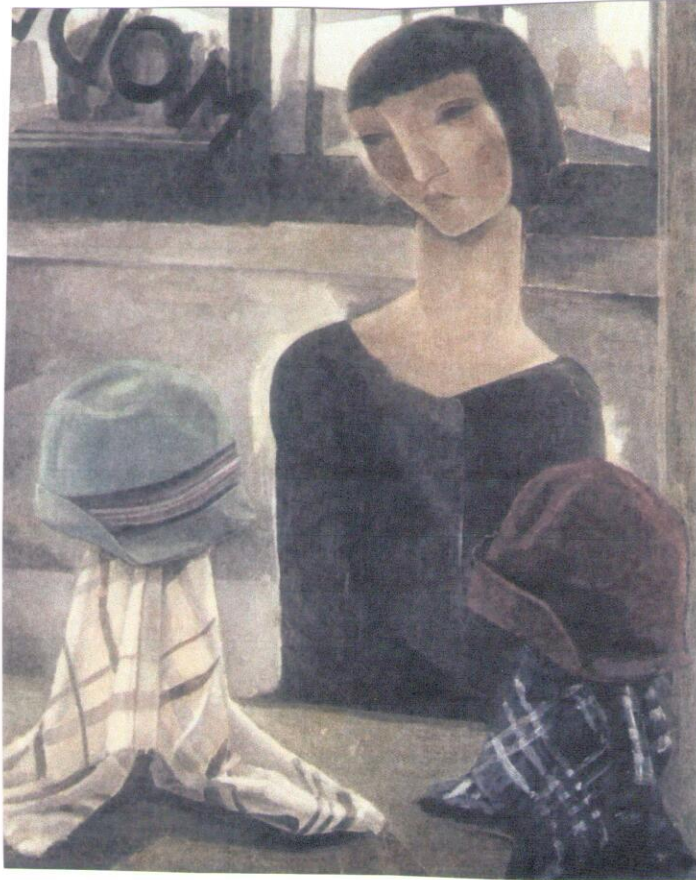


Fig. 9: Léon Navez, La Modiste

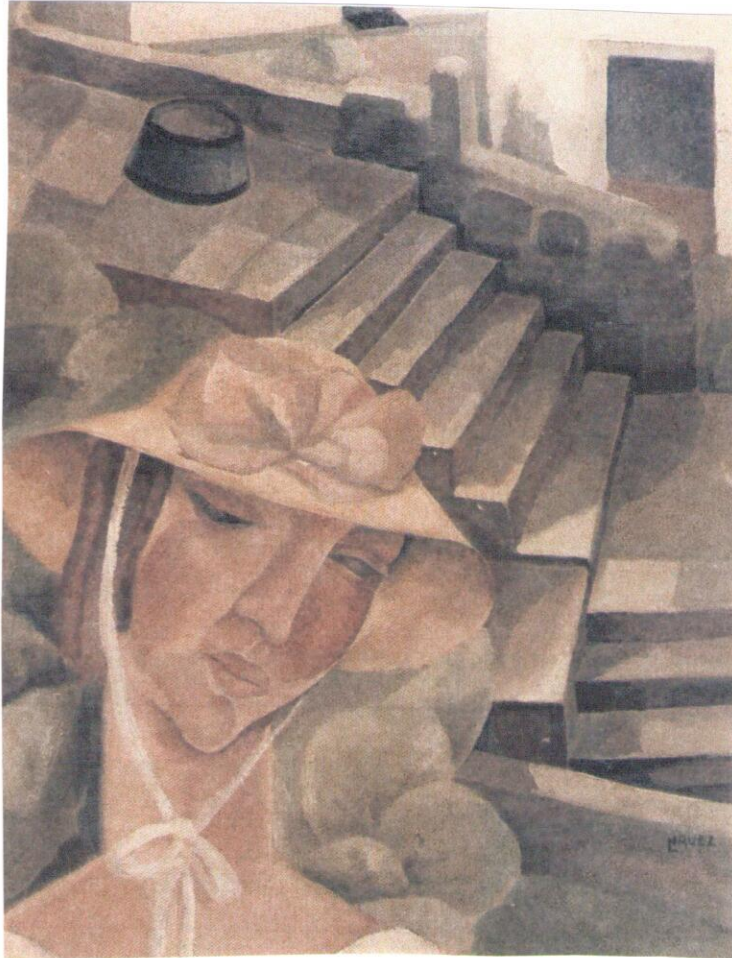


Fig. 10: Léon Navez, Woman in Bonnet by a Staircase



Fig. 11: Jean Brusselmans, Portrait of Gustave Van Geluwe, oil on canvas, 1946

Fig. 12: Henri François Raemaeker (Ramah), Portrait of Gustave Van Geluwe, oil on canvas

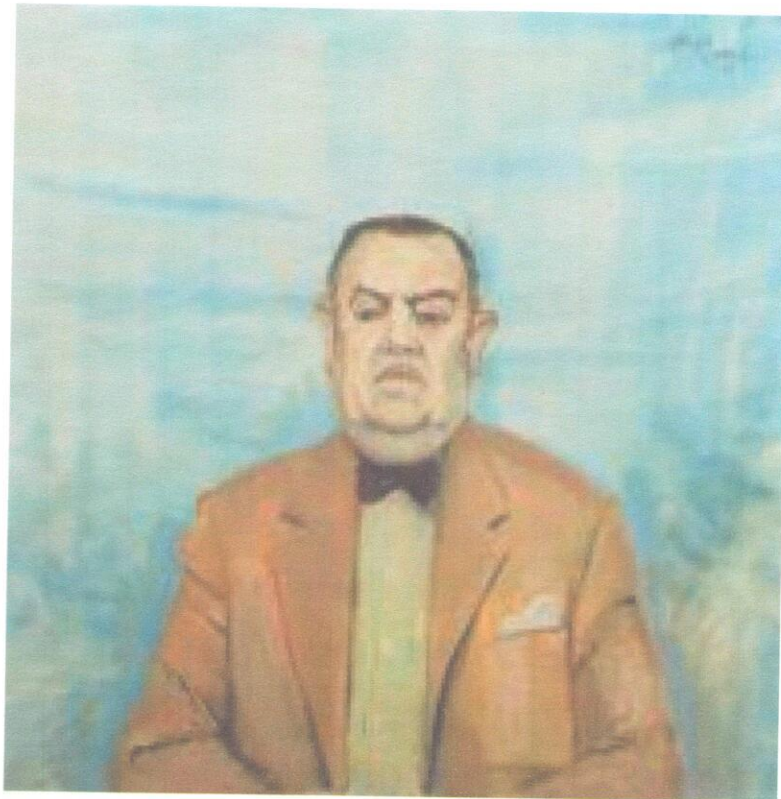


Fig. 13: Serge Creuz, Portrait of Gustave Van Geluwe, oil on canvas, 1955

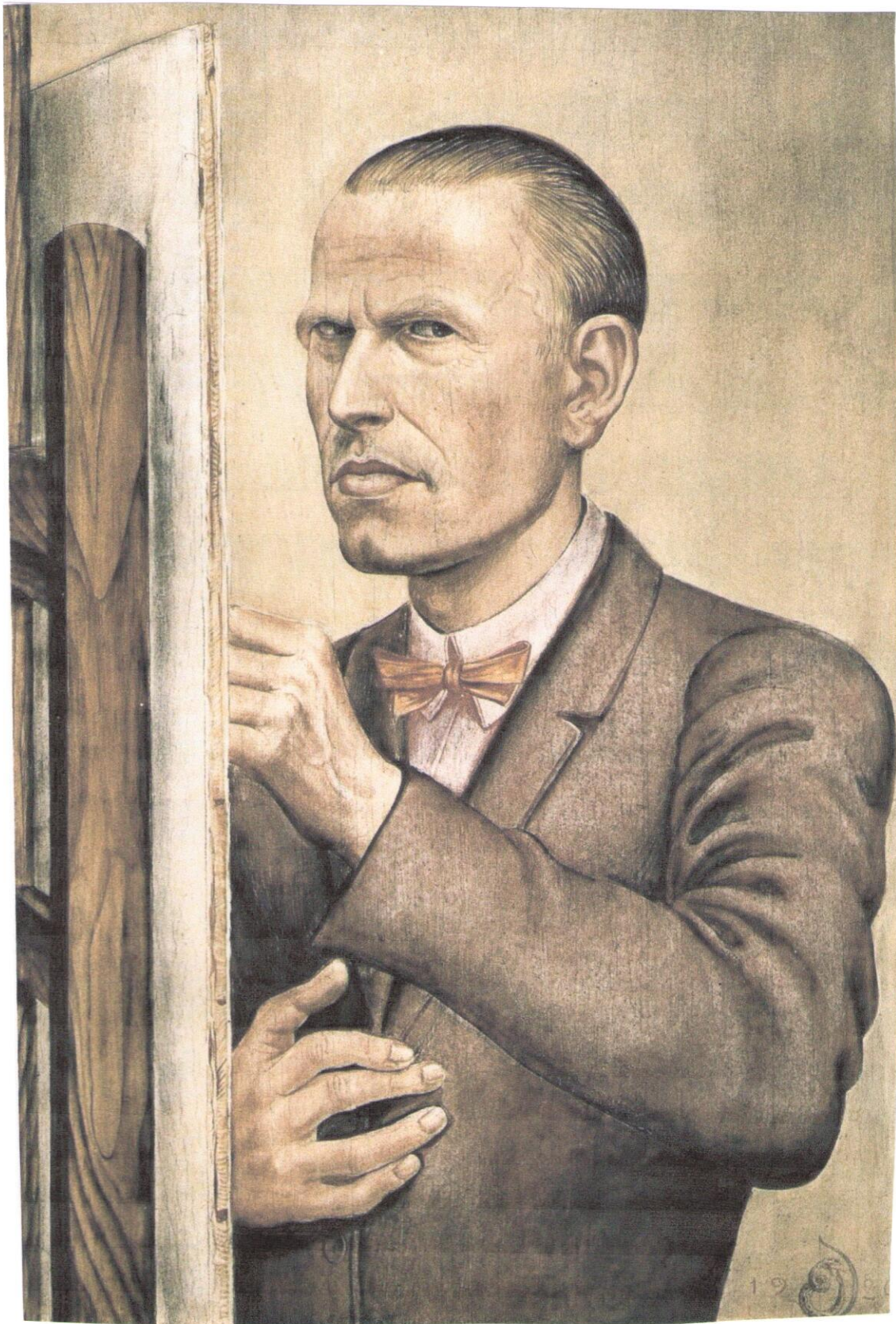


Fig. 14: Otto Dix, Self-Portrait, oil on panel, 1926

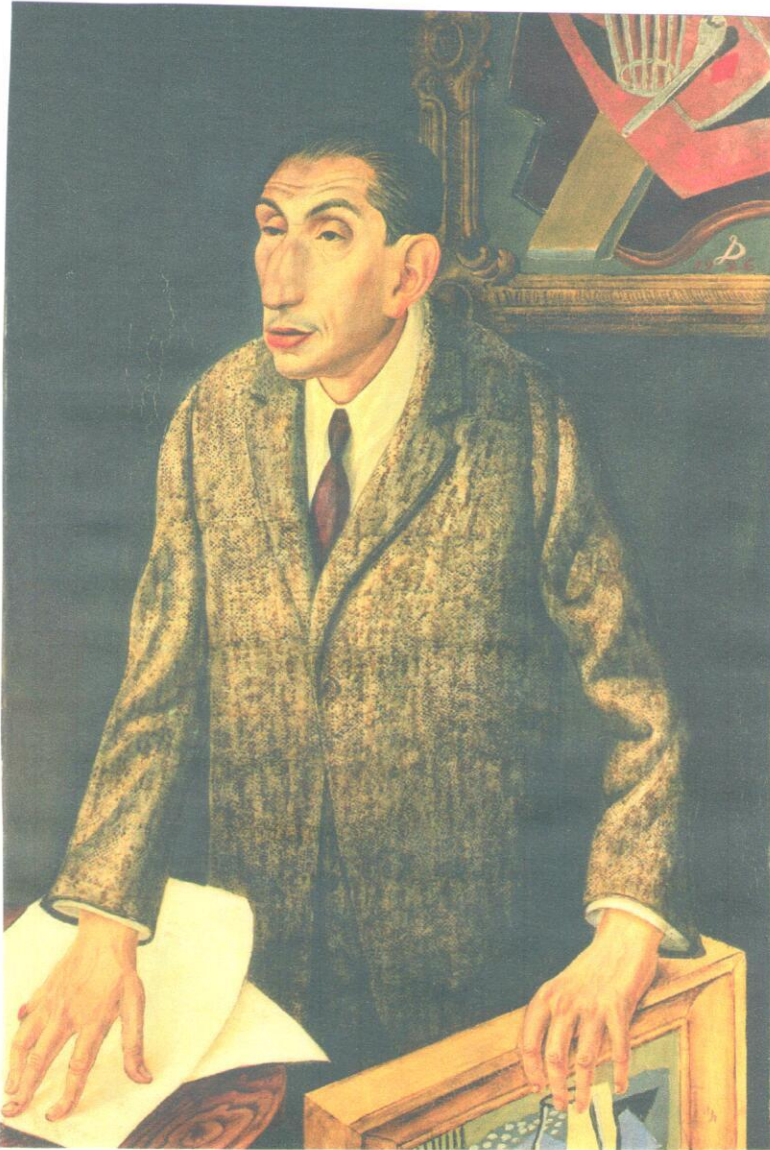


Fig. 15: Otto Dix, The Art Dealer Alfred Flechtheim, 1926

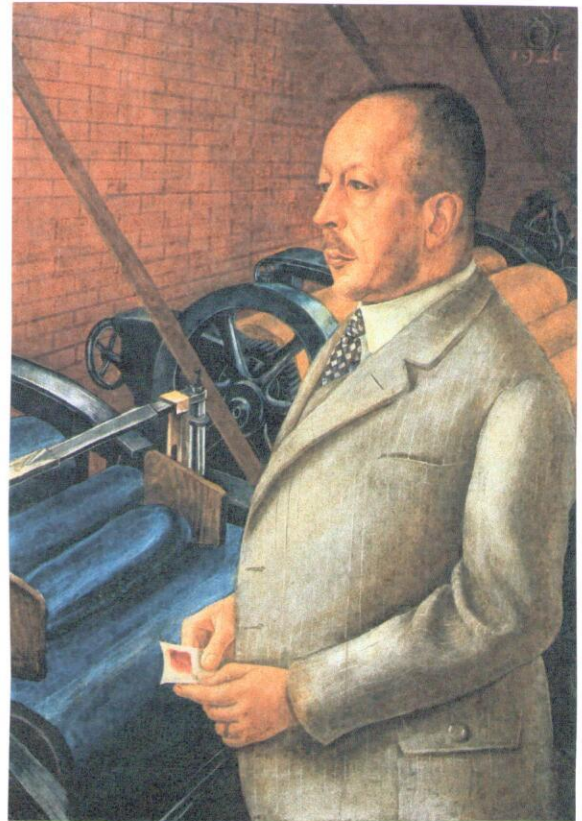


Fig. 16: Otto Dix, The Manufacturer Julius Hesse, 1926



Fig. 17: Christian Schad, Portrait of the Poet Ludwig Bäumer, oil on canvas, 1927



Fig. 18: Rudolf Schlichter, Portrait of Bertholt Brecht, oil on canvas, 1926



Fig. 19: Léon Navez, Portrait of a Woman, 1929



Fig. 20: Léon Navez, A Man with a Cat, oil on canvas