



Fig. 1) Erwin Domink Osen and Moa Performing, photograph, ca. 1910

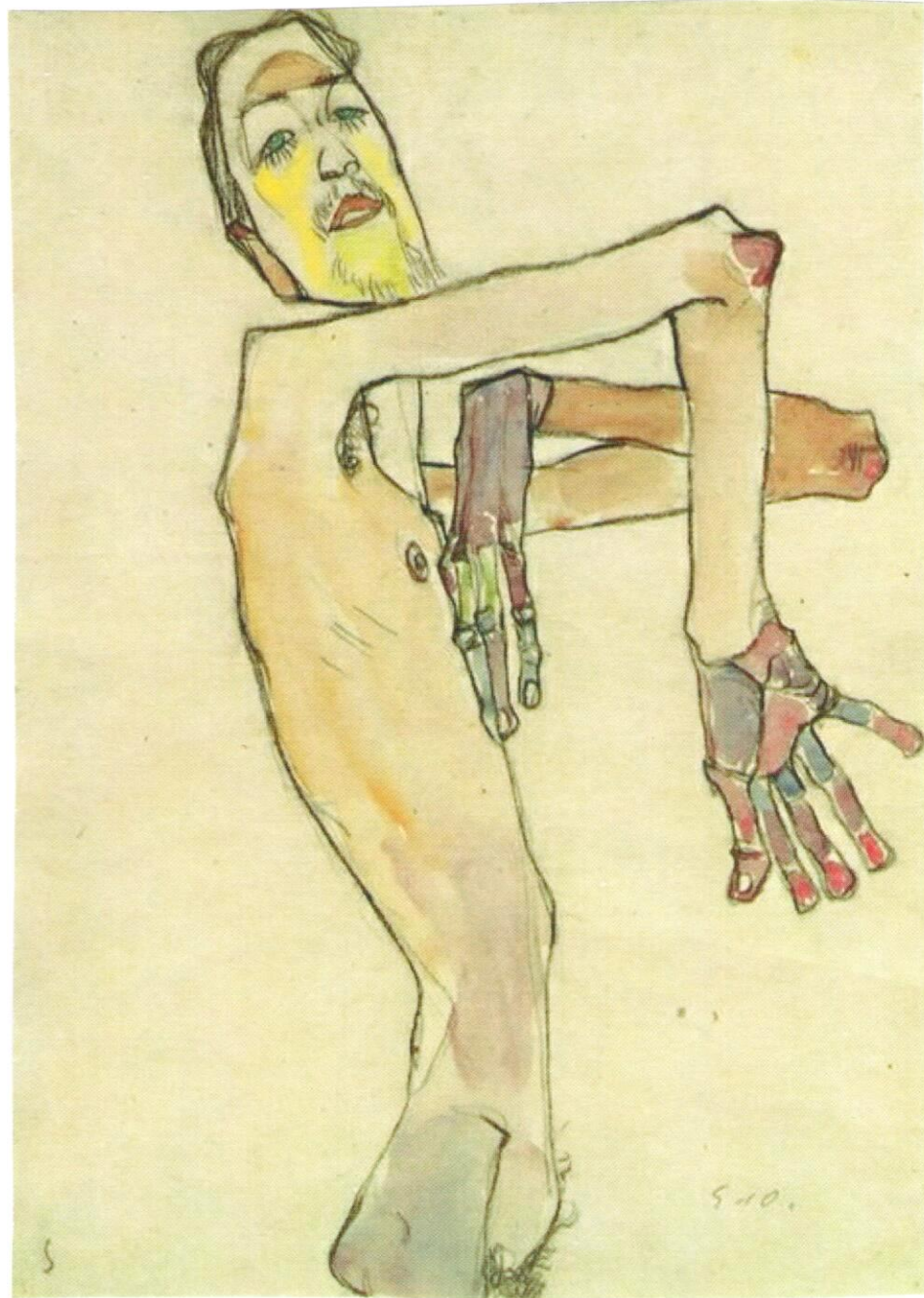


Fig. 2a) Egon Schiele, Osen Nude with Elbow Raised, gouache, charcoal, and watercolor, 1910, Leopold Collection



Fig. 2b) Egon Schiele, Osen in a Floppy Hat, watercolor and black chalk, 1910

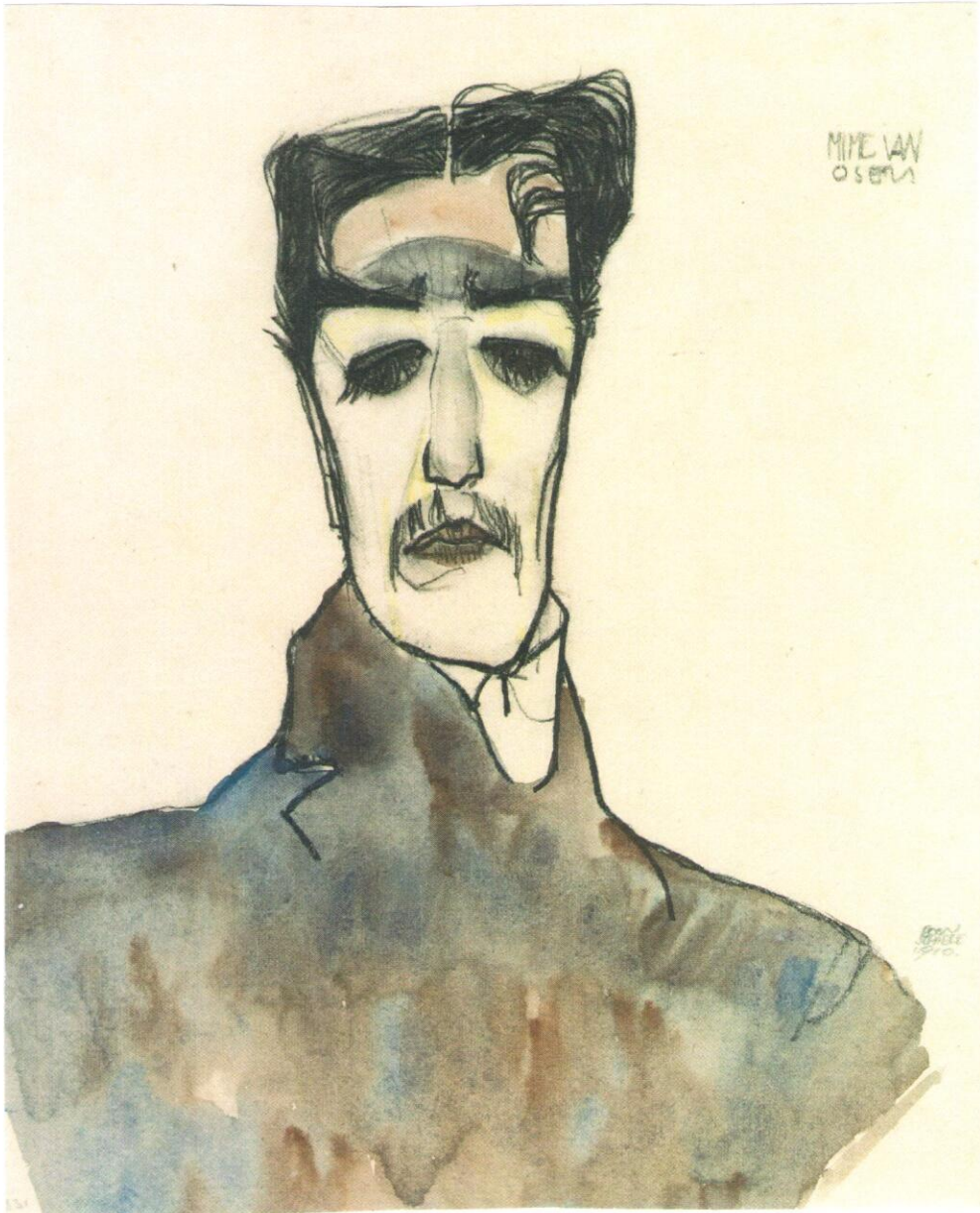


Fig. 3a) Egon Schiele, Mime van Osen in Jacket, gouache, watercolor, and pencil, 1910

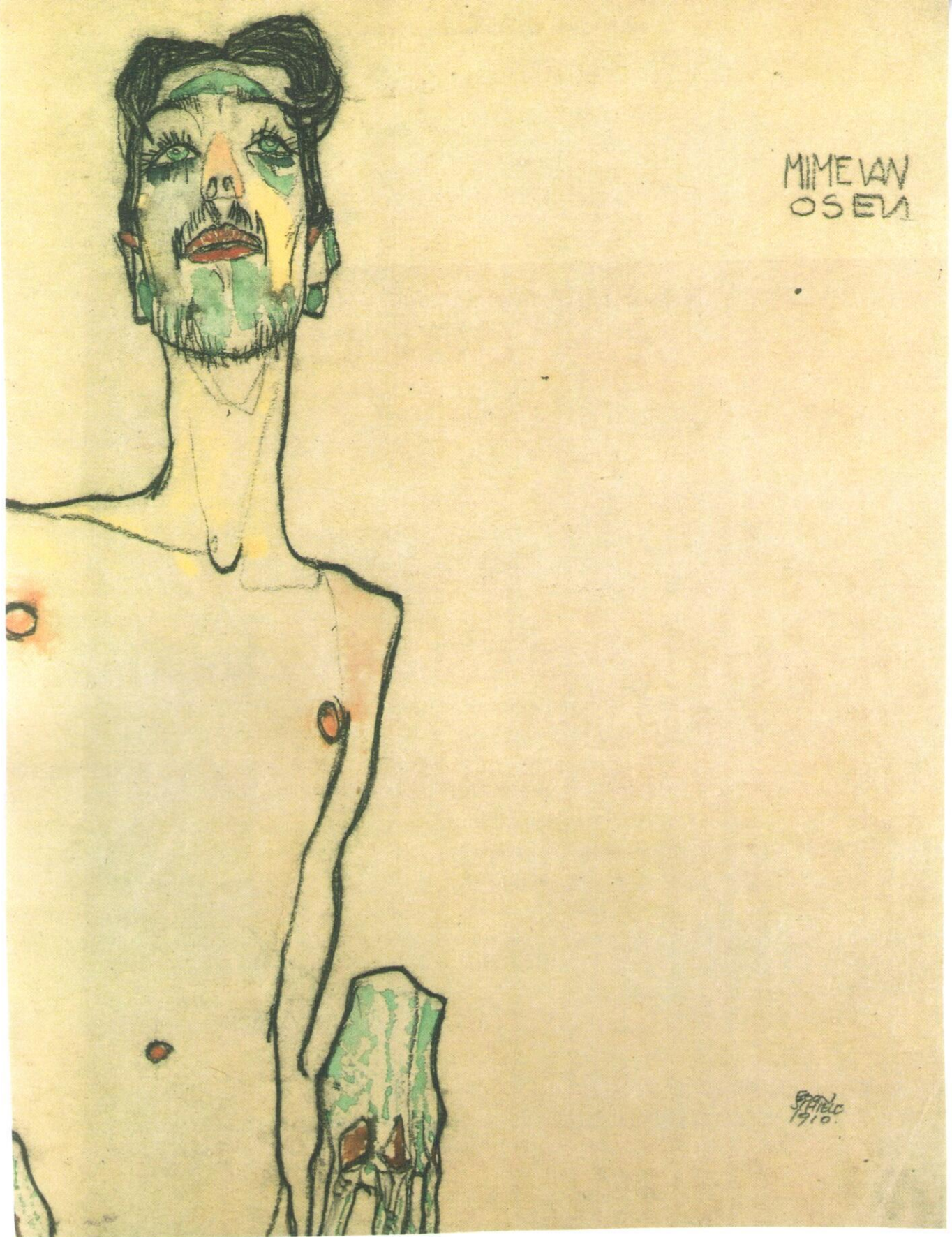


Fig. 3b) Egon Schiele, Mime van Osen, charcoal and watercolor, 1910, Neu Galerie Graz

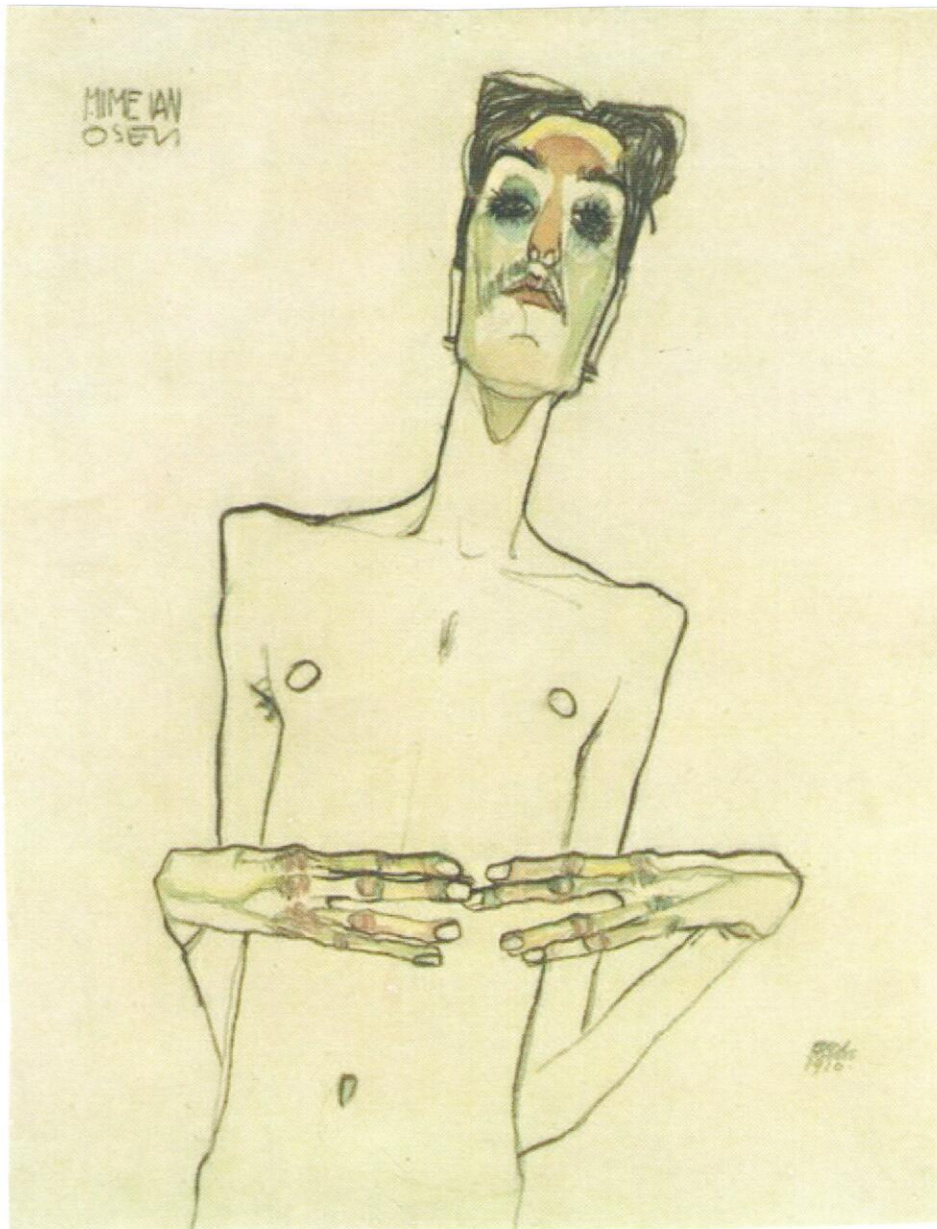


Fig. 3c) Egon Schiele, Mime van Osen, gouache, watercolor, and black chalk, 1910, Leopold Collection, Vienna

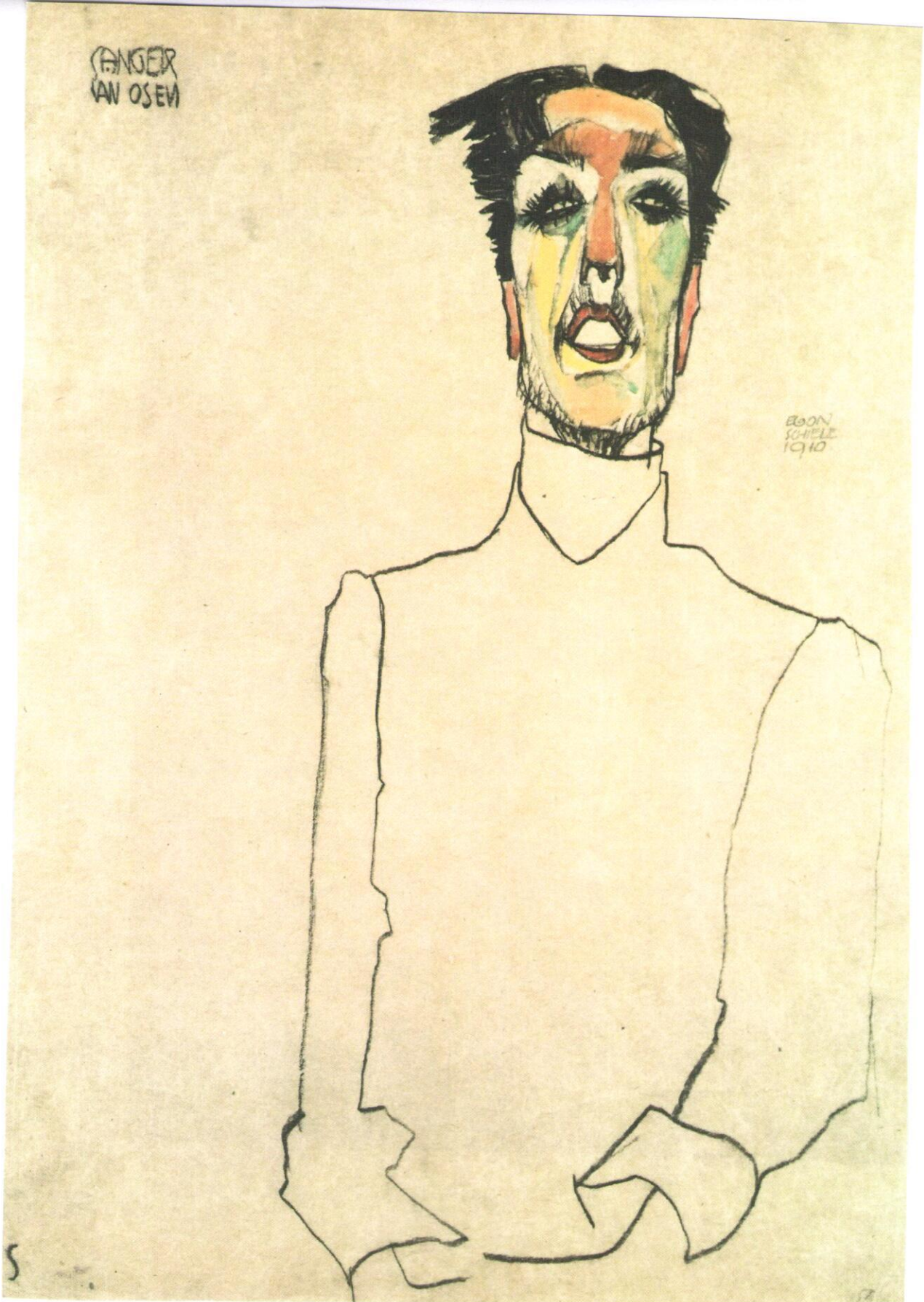


Fig. 4a) Egon Schiele, Sanger Van Osen, watercolor and charcoal on paper, 1910, private collection



Fig. 5a) Egon Schiele, Moa, gouache, watercolor, and pencil on paper, 1911

Fig. 5b) Egon Schiele, Moa, gouache, watercolor, and pencil, 1911



Fig. 5c) Egon Schiele, Portrait of Moa Seated, pencil, 1911, Albertina, Vienna



Fig. 6a) Erwin Dominik Osen, Seated Nude (Moa), watercolor and pencil on paper, 1912

Fig. 6b) Erwin Dominik Osen, Standing Nude (Possibly Moa), pencil and watercolor, 1912



Fig. 6c) Erwin Dominik Osen, Portrait of Patient Karl Kalnik, pencil and pastel on paper, 1913



Fig. 6d) Erwin Domink Osen, Study of a Nude Patient, pencil and watercolor, 1915

Fig. 6e) Erwin Dominik Osen, Portrait of a Male Patient, pencil and watercolor, 1915



Fig. 6f) Erwin Dominik Osen, Houses in Krumau, oil on canvas, 1912



Fig. 7) Erwin Dominik Osen, Poster Design for the Mikado, Munich Künstler Theater, 1913



Fig. 8) Erwin Dominik Osen, Martinwerk, oil on canvas, ca. 1958, Standort im Hoesch-Museum, Westfalhütte



Fig. 9a) Erwin Dominik Osen, Portrait of Dr. Alfred Stix, tempera on canvas, 1947, Österreichische Galerie, Belvedere, Vienna

Fig. 9b) Erwin Dominik Osen, Portrait of Prof. Dr. Karl Wisoko-Meytsky, oil on canvas, 1948

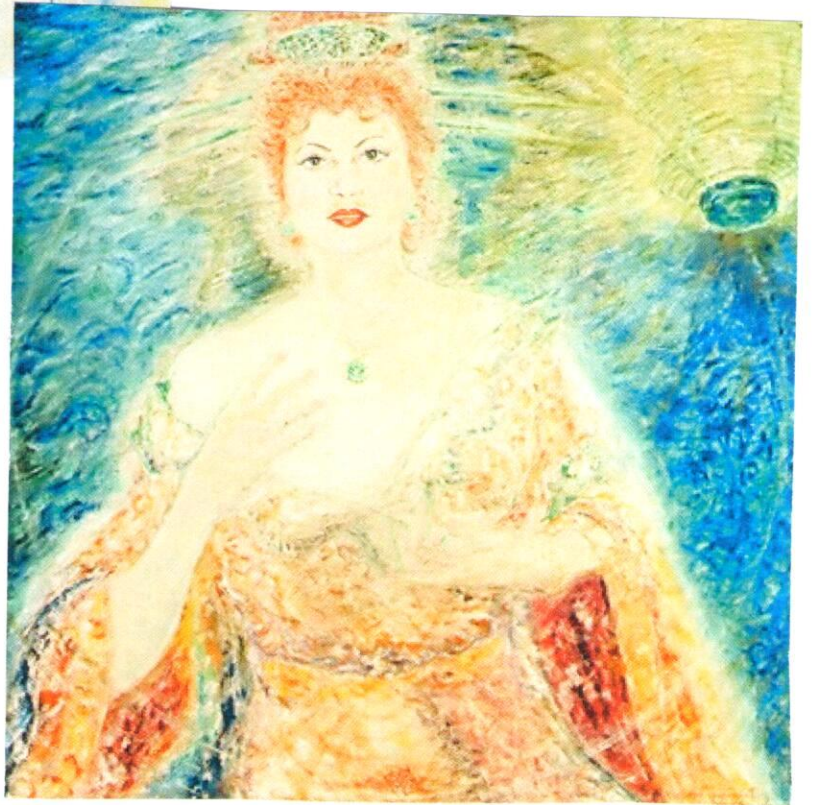


Fig. 9c) Erwin Dominik Osen, Portrait of a Young Girl, oil on canvas, 1954

Fig. 9d) Erwin Dominik Osen. Portrait of Ljuba Welitsch, oil on canvas, 1953

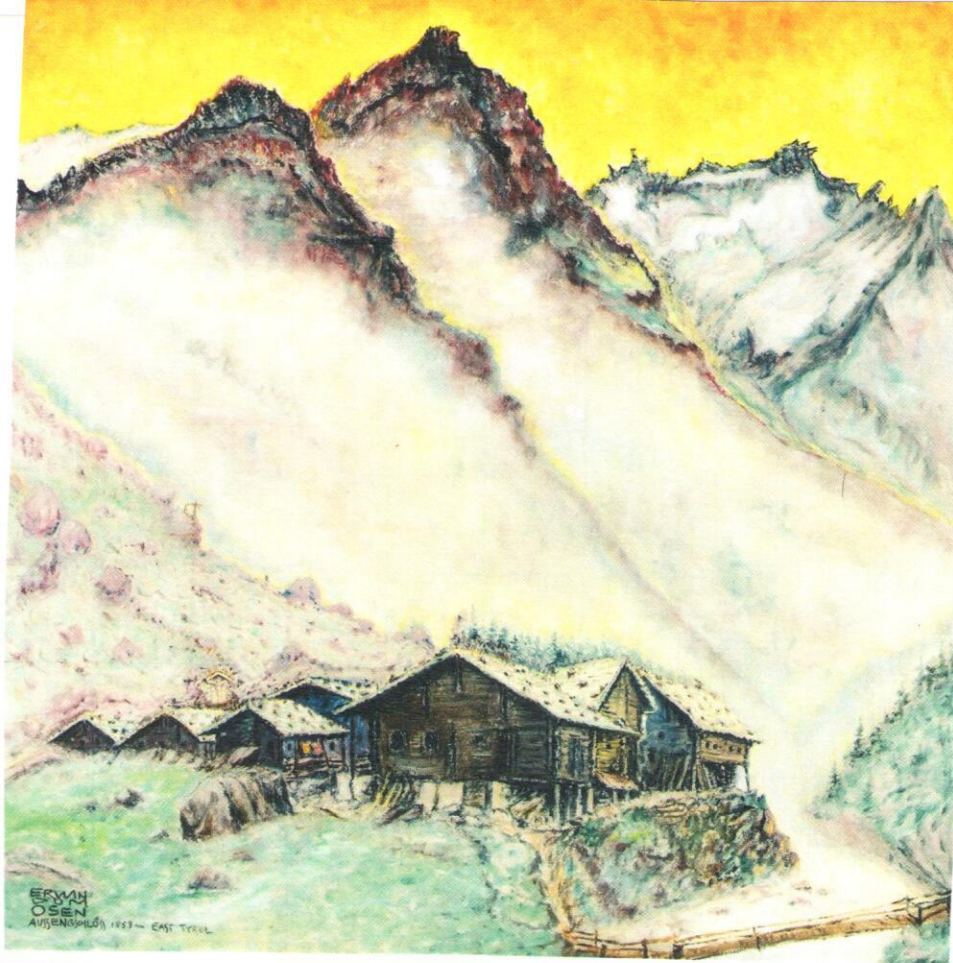


Fig. 10a) Erwin Dominik Osen, Aussergschlöss, Osttirol, oil on canvas, 1920

Fig. 10b) Erwin Dominik Osen, Rosengraben, gouache and watercolor on paper ca. 1930



Fig. 10c) Erwin Dominik Osen, Das Kahlenbergerdorf vom Nasenweg, oil on canvas, 1940, Historischen Museums der Stadt Wien

Fig. 10d) Erwin Dominik Osen, Bergdorf, oil on canvas

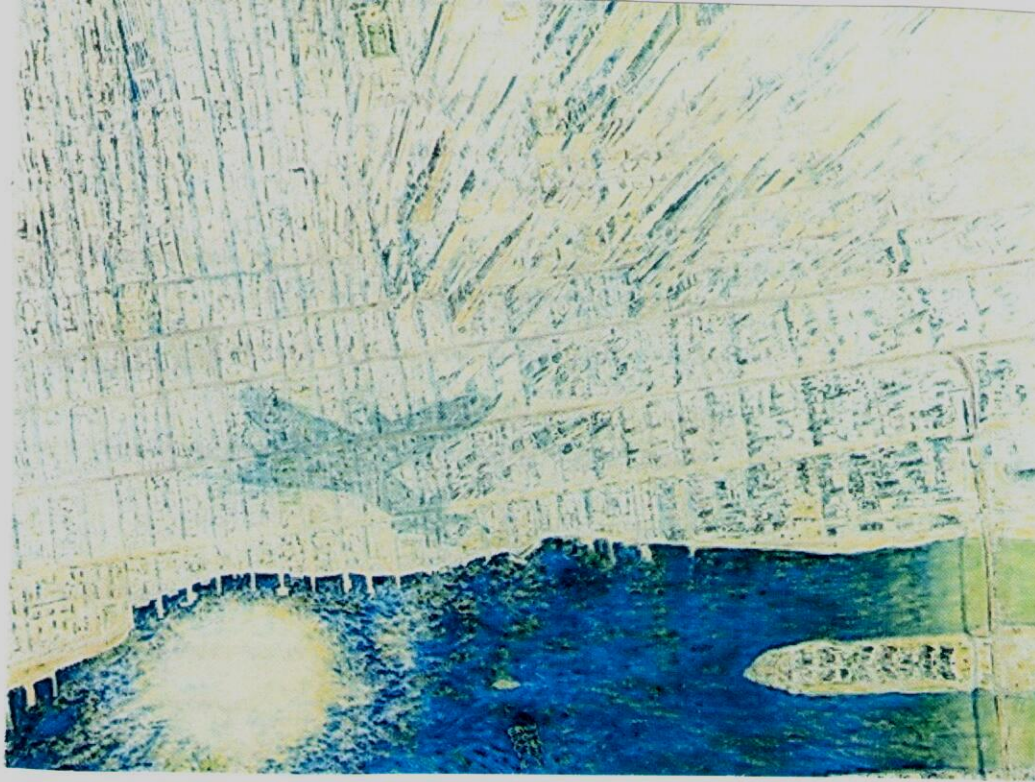


Fig. 11a) Erwin Dominik Osen, New York from the Air, oil on canvas, 1951

Fig. 11b) Erwin Dominik Osen, The Island of Lost Marrches, South Seas, oil on canvas

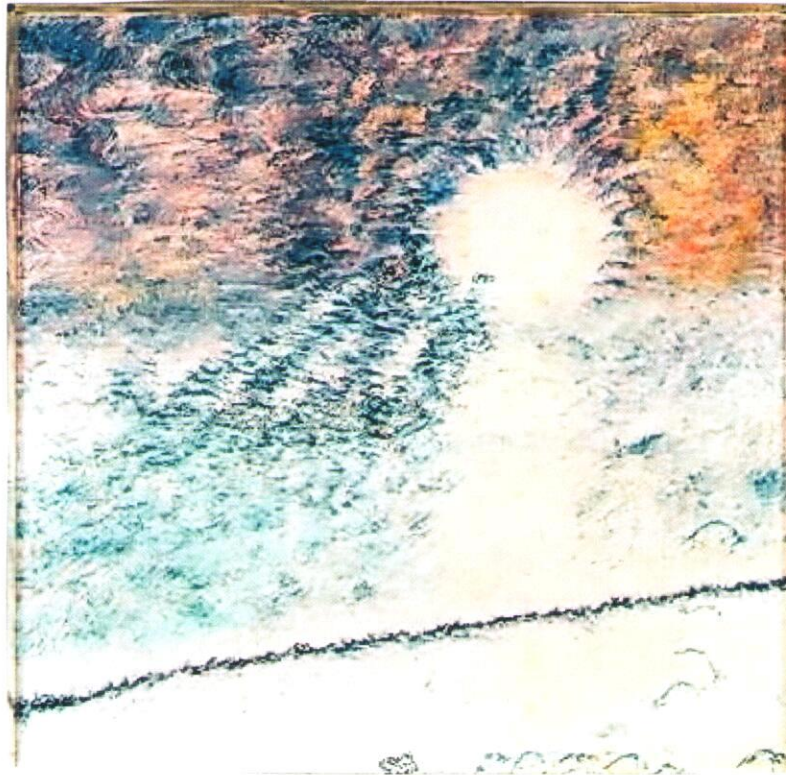


Fig. 11c) Erwin Dominik Osen, Storm in the South Sea, oil on canvas

Fig. 11d) Erwin Dominik Osen, Rising Sun in the South Seas, oil on canvas

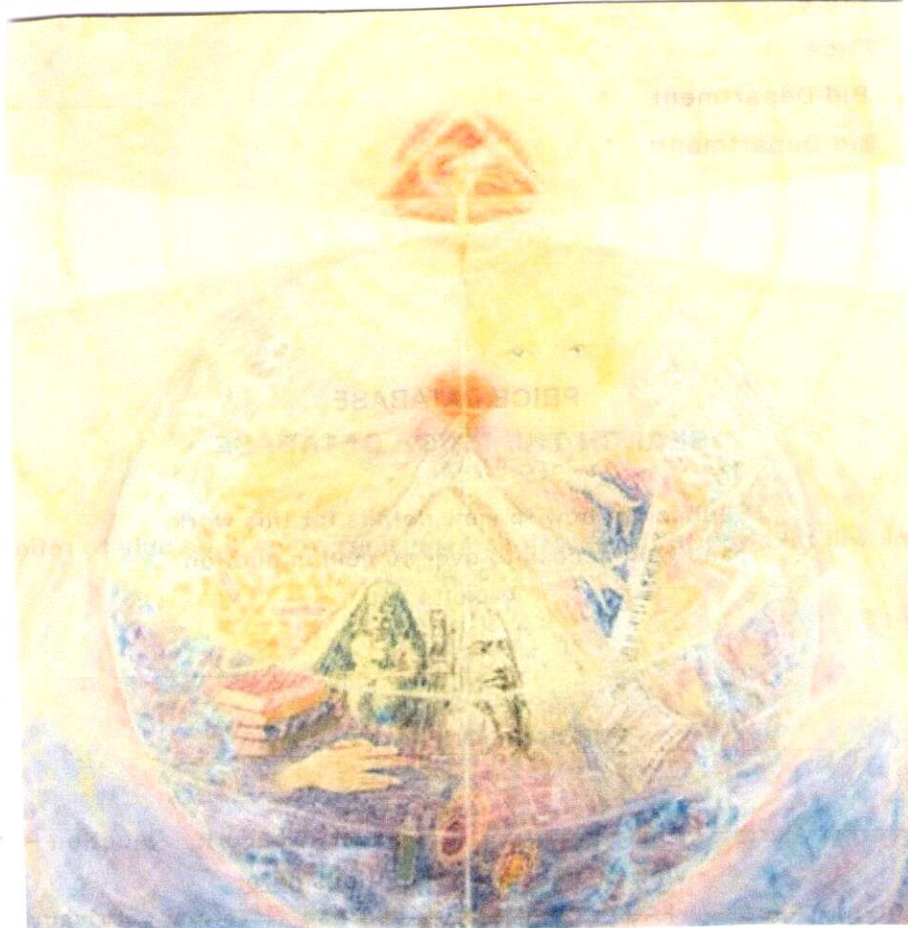


Fig. 12a) Erwin Dominik Osen, Sein (To Be), oil on canvas, 1947

Fig. 12b) Erwin Dominik Osen, Pax et Ars, oil on canvas, 1954

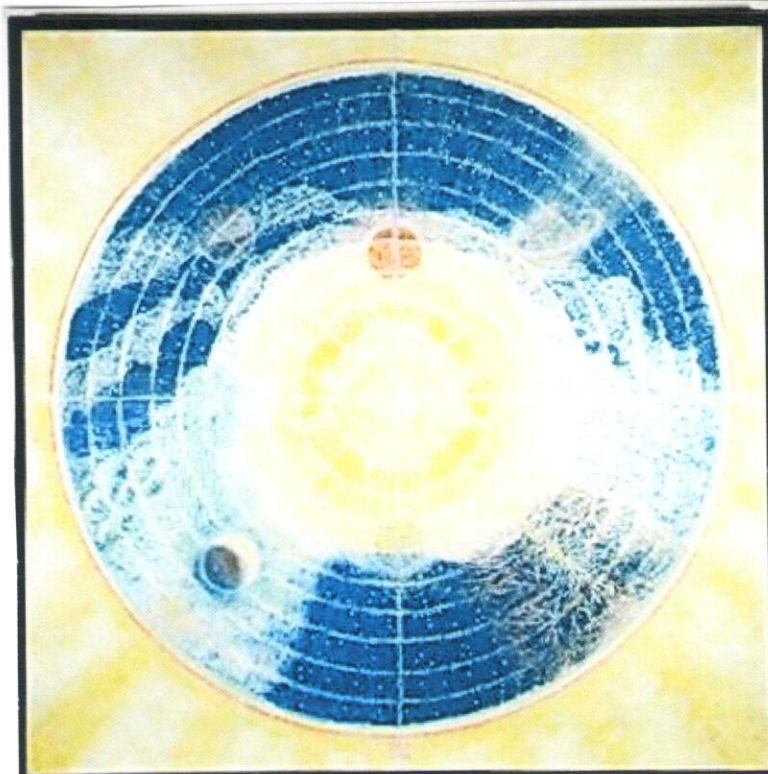


Fig. 12c) Erwin Dominik Osen, Utopia, oil on canvas

Fig. 12d) Erwin Dominik Osen, Weltallvision (All World Vision), oil on canvas



Fig. 13) Erwin Dominik Osen, Portrait of the Artist's Wife, Eibylein – lby Chong-Osen with Dog, tempera on paper